



## ELECTRIC POWER ASSISTED CYCLING - MANUAL



Model: **QDOS**



Firstly may we congratulate you on purchasing your new electric power assisted e.bike.

Please take time to read your manual. We have tried to write it in a way that is simple and easy to follow, whilst explaining how your bike works and how it is maintained. At any point if you feel you need help we have a technical helpline for support.

## Welcome to E.LIFE power assisted cycling

Simply explained this is how your electric bike basically works.

1. Switch the battery to ON, with the switch on the side left-hand side of the battery.
2. Switch the power on by pressing the 'POWER' button on your controller on the handlebars.
3. As you begin to pedal a sensor will read the level of effort needed to turn the wheels of your bike.
4. After one complete turn of the pedal the electric motor kicks in making pedaling much easier.
5. There are 3 settings on your controller on the handlebar, allowing you to set the level of assistance you require. For example: Riding up a hill you'll probably use 'level 3', mode.
6. Change the level of assistance you need, any time and as often as you wish.
7. The motor works to assist pedalling, stop pedalling and the motor stops too.
8. Applying the brakes cuts the motor
9. You can also choose to switch the assist OFF and ON on the controller at any point in your journey. This helps to save battery power if it's not needed.

The more you use the assist, the more power it uses, each rider is different so figures can vary considerably with different rider weight and the terrain you ride. Generally with normal use, you should be able to obtain around 20 miles, before you need to re-charge your battery.

We Recommend that you get used to your new e.bike and the level of assist you place on it, you'll soon be able to work out how long a journey you can make and safely return under assist. You can of course ride as you would a normal bike if the charge runs out.

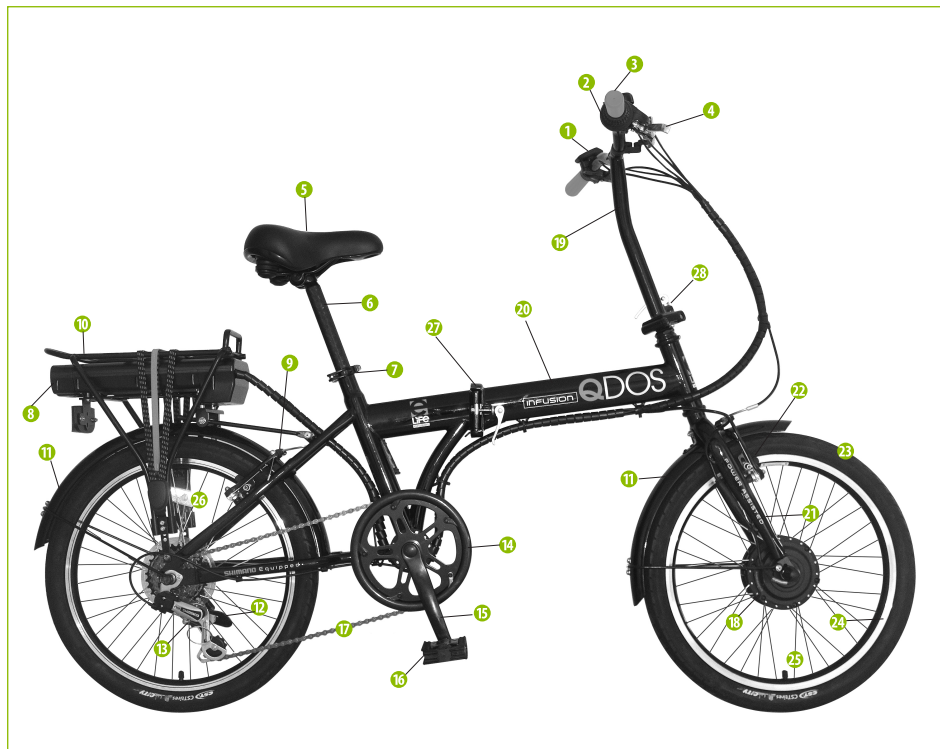
Please call our  
Technical help line:  
(weekdays 9am-5pm)

**01702 208187**

(standard call rate charge applies)

## Schematic of your new bike

*We realise that not everyone is an ardent cyclist and for some of you this might be your first real step back into cycling so we have added a diagram of your bike below to give you a little better understanding of the parts on your bike, and where they can be found.*



- |                |                            |               |                   |                                       |
|----------------|----------------------------|---------------|-------------------|---------------------------------------|
| 1 Controller   | 7 Quick release Seat clamp | 13 Derailleur | 19 Handlebar Stem | 25 Innertube Valve                    |
| 2 Gear changer | 8 Battery                  | 14 Chainguard | 20 Bike Frame     | 26 Reflector                          |
| 3 Grip         | 9 Rear V-Brake             | 15 Crank Arm  | 21 Front Fork     | 27 Folding Mechanism (Frame)          |
| 4 Brake Lever  | 10 Rear Carrier            | 16 Pedal      | 22 Front V-Brake  | 28 Folding Mechanism (Handlebar Stem) |
| 5 Saddle       | 11 Mudguard                | 17 Chain      | 23 Tyre           |                                       |
| 6 Seatpost     | 12 Kickstand (folded up)   | 18 Motor      | 24 Wheel Rim      |                                       |





Please call our  
Technical help line:  
(weekdays 9am-5pm)

**01702 208187**

(standard call rate charge applies)

## INDEX

Page	3	Welcome to E.LiFe power assisted cycling
Page	5	Index
Page	4	Schematic of your new bike
Page	5	Unpacking your new bike
Page	6-7	Setting-up your electric bike
Page	8	Pre-Ride checks / Getting Started
Page	9	Understanding your controller
Page	10	Understanding your Battery
Page	11	Understanding the Gears
Page	12	Charging your Battery
Page	13	Maintenance of your electric bike
Page	14	Safety on your bike
Page	15	Safety on the Roads
Page	16	Simple Troubleshooting
Page	17	Warranty
Page	18	Notes

## Check List

- 1.** Your complete E.LiFe bike
- 2.** Saddle & Seatpost
- 3.** Box containing:
  - Battery Charger and power lead.
  - Pedals
  - Tool Kit in Bag
- 4.** 2 Keys: these are attached to handlebars
- 5.** This Manual

**Handy Tip:** *It's a good idea to rest your bike on the bike stand which is attached to the rear chainstay, this makes it much easier and leave your hands free to make adjustments to other parts.*



## IMPORTANT!

PLEASE REMEMBER THAT IT IS IMPORTANT TO KEEP THE CARTON YOUR BIKE ARRIVED IN, COURIERS CANNOT COLLECT YOUR BIKE WITHOUT A CARTON SHOULD YOU HAVE NEED TO RETURN IT TO US.

Please call our  
Technical help line:  
(weekdays 9am-5pm)

**01702 208187**

(standard call rate charge applies)

## Unpacking your new bike

Your bike comes 98% assembled in the Carton, you only need to Fit the pedals, unfold the Frame the handlebar assembly and insert the saddle assembly.

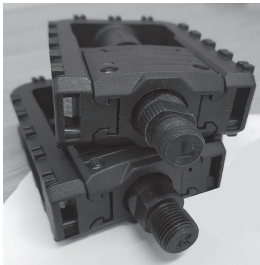
1. Before you begin to unpack your e.bike we recommend you get another person to assist you as it is much easier with 2 persons to lift out of the box.
2. Remove all the packing materials used to protect the bike and dispose of it later in a responsible manner.
3. Once you have unpacked the bike it is a good idea to check to make sure there has not been any damage in transit. ( If you find anything missing or damaged, contact the Technical helpline below.

Having unpacked your bike follow the simple steps of fitting the pedals, handlebar and saddle assemblies by following the instructions on the next page.

**TIP:** Is it a good idea to place the bike on the stand attached to your bike as this makes it a lot easier to complete the simple assembly.



Quick Release frame mechanism



Stamped Crank ends 'L' and 'R'



Adjusting seat clamp



Fold up and Lock the stem

## Setting up your e.bike

### Unfold the Bike Frame

To unlock : Release the lever and fold outwards from the frame, lift the mechanism which lifts the locking pin and unfold.

To lock: Simply reverse, locking the frame together in position applying a little force to close the lever.

Adjust tightness as required by rotating the lever when in the unlocked ( raised) position then re-close.

### Fitting the Pedals

Match the left pedal to the left crank, and the right pedal to the right crank.

Left Pedal - Tightens **Anti-clockwise**

Right Pedal - Tightens **Clockwise**

Tighten the pedal as far as possible with your fingers. Use the tool provided to tighten them firmly

**NOTE:** Should you ever need to replace the pedals remember the right pedal tightens clockwise and the **left pedal anti-clockwise**.

### Fitting the Saddle

The Saddle and Seatpost are already fitted together.

1. Slide the seatpost into the seattube and close the tension lever on the quick release clamp to lock your seat in place.
2. Adjust the saddle height to suit you by releasing the clamp and tightening when at the correct height.
4. If the clamp does not tighten enough to hold the saddle in position simply lift the tension lever to release and turn a quarter of a turn clockwise and close the tension lever. Repeat as necessary.

**NOTE:** Be sure not raise the seatpost higher than the minimum insertion point marked clearly on the seatpost.

### Locking the Handlebar/Stem

The handlebars and stem come folded down and strapped to the side of your bike, cut the ties and lift the handlebar assembly into upright position, Lock in position using the quick release mechanism. Before riding always check that the quick release clamp is tight.



Check battery for charge



Switch battery ON



Press the power button



Applying the brakes activates the brake sensor which cuts the power to the motor.

Please call our  
Technical help line:  
(weekdays 9am-5pm)

**01702 208187**

(standard call rate charge applies)

## Pre-Ride Checks

Complete these checks before every ride

1. Check to make sure all nuts/fastenings are tight
2. Check that your tyres are inflated sufficiently (see tyre wall )
3. Check that the brakes are working correctly. (These are set by the factory and should not require adjusting).
4. Check your battery for charge.

(Note: Your new E+PLUS battery is supplied with a partial charge)

## Getting Started

1. Switch the battery on with the switch on the left-hand side of your battery
2. Press top button on the Controller on your handlebars
3. 'MODE' is set on '1' - This is a default setting.  
**THAT'S IT.....**You're ready to go.
4. To start , simply begin to pedal. Once the crank is turning you will feel the motor kick-in and the electric system begin to assist you.
5. You have 3 levels of assist and its a good idea to try all levels to give you a feel of the effect this has on your riding.
6. Remember, stopping pedalling or braking cuts the motor assist, so you can always feel safely in total control.

Applying the brakes activates the brake sensor which cuts the power to the motor.

## Understanding your controller

Your Module Controller has several functions and is relatively simple and easy to operate, we have listed the buttons and their various functions.

Battery Power  
indicator

MODE  
level  
indicator

MODE  
level  
control  
buttons

Light Sensor  
Auto - controls brightness of LED lights

ON/OFF  
button



Press to switch ON/OFF



Press to increase assist  
level 1-3.



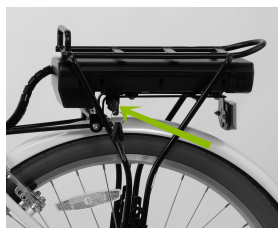
Press to reduce assist  
level 3-1.



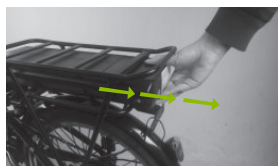
Holding down this  
button activates the  
'WALK MODE' which  
engages the motor  
from a standing start  
upto 5 mph which is a  
great way to set of  
from traffic lights, or  
when walking with  
your bike.

### handlebar control unit

1. ON/OFF button - Switch on after you have switched battery switch to 'ON'
2. Lever buttons - 1- 3, easy selection levels of assistance
3. Battery Indicator lights - These are red and go down as you use the power.
4. As you ride up a hill the power indicator drops down showing increased resistance levels, but once back to level ground the indicator lights will return to a more accurate position of available power levels.
5. This bike has a 6km walking mode function, which allows you to push your bike effortlessly over steep ridges or hills. You can activate this function by holding down the minus button for 3 seconds.

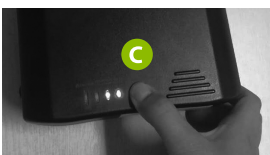
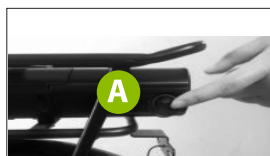


Battery lock



Once unlocked the battery can be withdrawn. It is a tight fit so will require a slight tug.

Battery configuration



Press this button to show battery charge level, the battery needs to be switched 'ON' to do this.



The Battery charging point can be located on the rear of the battery as shown so can be charged when ON or OFF the bike.

## Understanding your battery



### 1. Security

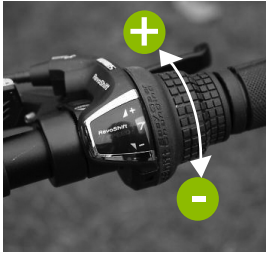
1. You are supplied with 2 keys to secure your battery to your bike. It is advisable to separate the keys as they **CANNOT BE REPLACED IF LOST.**
2. The key secures your battery to the bike and by unlocking, the battery can be removed by sliding towards you, sideways out from the frame.
3. To replace simply reverse the procedure.

### 2. Battery operation

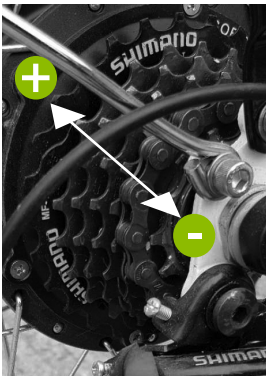
- A** Switching ON/OFF is by way of a switch on the rear left-hand side, remember to switch OFF when not in use as this may drain the battery.
- B** To check the power level of the battery simply press the Indicator Button and check the light display. **C** **Please Note:** This can only be done with the power switched on.
- D** To charge your battery connect the charger with the lead supplied by removing the rubber cover and inserting the pin connector, plug into the main and then switch on the power.

### 3. Battery Charger

1. **NOTE:** Only charge your battery with the Charger supplied with your e.life bike.  
The charger is set to 220/240V. Never use 110v setting.
2. Avoid dropping the Charger as this may damage the sensitive electronics within the casing.
3. You can leave the battery charging, it will stop charging by itself when it has reached full charge, but it is not recommended to leave charging for any considerable time over what is required.



Gripshift Gear changer



Rear Derailleur

## Understanding the Gears

The Gears work exactly as a normal bike and are independent of the electric motor.

The Revoshift gear changer is fitted to the right side of the handlebars. It consists of a large gripped ring which you turn to the '+' side to higher the gear and the '-' side to low gear.

The low gear is the easiest and the high gear is the hardest.

The gears are pre-set in the factory so should not need adjusting.

Over a period of use the cables will stretch and may need adjustment which is probably done at your 3 month service.

Your local bike shop or specialist e.bike shop will offer this service.



## Charging your Battery

Your Lithium Battery arrives partially charged.

Your Battery can be charged on or off your bike.

1. Plug your charger into the mains, the LED light will illuminate GREEN
2. Connect the charger to the battery using the lead provided, the LED light on the charger will change to RED. This indicates it is charging.
3. Once Fully charged the LED light on the charger switches back to GREEN indicating the battery is fully charged, and then goes off.

### Basic rules to follow when charging your battery

1. Do not cover charger with any material or substance that may restrict airflow to the charger. The charger needs to 'Breathe' to keep cool.
2. Charging your battery each time you use it no matter how far the trip, will prolong the life of the battery.
3. DO NOT leave the battery discharged for long periods.
4. Never open the charger or change settings on charger.

To fully charge your battery takes approx. 2-3 hours



Battery charging connection point



Battery Charger

Please call our  
Technical help line:  
(weekdays 9am-5pm)

**01702 208187**

(standard call rate charge applies)





It is ok to oil the front and rear axles and chain . The Motor should not be lubricated.

Please call our  
Technical help line:  
(weekdays 9am-5pm)

**01702 208187**

(standard call rate charge applies)

## Maintenance of your e.bike

### General

1. Wipe your bike over with a dry cloth, or neutral detergent.
2. Use lubrication oil for metal parts. i.e. chain, axles.
3. Wipe down Plastics and paint coated parts with a quality cloth.
4. Increase the frequency of lubricating oil at wet or humid areas  
( Recommend 30SAE lubricating oil)

### Weekly Inspection

It is recommended that after this period you should inspect your bike as things will slacken off and need re-tightening.

### 3 Month Inspection

We recommend after 3 months you complete a full service on your bike to keep it in excellent working order.

The simplest way is to take into your local bike shop. When stored and not in use remove the battery and store in a cool, dry place, charging periodically as the battery will discharge over time of non use. Failure to do this will result in the battery falling into a dormant state rendering the battery unrepairable.

#### PLEASE NOTE:

If you do not feel that you can complete the maintenance of your bike, please take it to your local bicycle workshop where they will be able to assist you.



## Safety on your bike

Getting used to your new electric bike is always a wise step to take.

It therefore makes common sense, for your first few rides, to choose somewhere away from major roads with traffic, people and obstacle whilst you become familiar with the controls and gain confidence in how your electro- assist works.

It is now compulsory to always wear a Helmet when riding a bike but there are also other items of protection you might consider ....not forgetting your eyes.

Most serious cycling accidents involve head injuries, some which may have been avoided had the rider worn a correct helmet. Check your helmet meets the correct classification standards appropriate for the riding you're doing. ( Check with your local Argos store or website)

Please make sure you wear clothing and footwear appropriate for riding, loose clothing and loose shoe laces can cause accidents if caught in moving parts on your bike.

Remember this is the UK, and the weather is changable, either wear or pack waterproof clothing.

Please call our  
Technical help line:  
(weekdays 9am-5pm)

**01702 208187**



## Safety on the Roads

When you join the road system you must obey the Traffic Laws like the rest of the vehicles travelling along that road.

Always exercise maximum caution on busy roads especially around large vehicles as you are not always seen.

Be aware that in wet conditions your brakes stopping power ( and those of other road users) is greatly reduced.

When riding at night make sure your bike conforms to the lighting laws as cyclists are often hard to spot for drivers and pedestrian, especially in the winter months where hours of daylight are reduced. Your trip out may be in daylight...your trip back may not.

Keeping your e.bike well maintained, wearing the right clothing, and following some common sense rules will reward you with many hours of fun and enjoyment for many years to come....

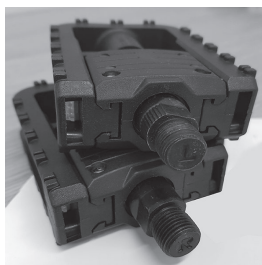
....Happy Cycling.

## Simple Troubleshooting

In reality there are not many things that can go wrong with an electric bicycle so generally speaking any problems you may have, should be easy to resolve.

Problem :	Make these checks :
Power indicator on the Controller does not light up	Has the battery been switched on? Does the battery have a charge?
Power indicator on the Controller lights up but the motor doesn't start.	Check that <b>all</b> the cables are connected. Check that the sensor and sensor disc are not damaged
The Battery is showing no charge	check that your battery is switched on before you press the charge indicator button.
My charger is not charging the battery	Check the fuse in the charger plug. Check that the cables are connected properly.

If you make the checks outlined above and your electric bike is still not working then please call our technical helpline for assistance.



Should you ever need to remove or replace your pedals it is important to know that left-hand pedal screws in **ANTI-CLOCKWISE** and the right-hand pedal screws in **CLOCKWISE**. Pedals are normally stamped on the ends of the axle of the pedal as in the photo, L and R.

## Warranty

Subject to the following, Ideal World warrants that the goods will correspond with their specification at the time of purchase and will be free from defects in material and workmanship.

Ideal World offers a 2 year warranty on the frame from any problems relating to manufacturer workmanship or arising from material defects including breakages or cracking caused whilst riding ( other than rider misuse).

Ideal World offers 12 months warranty on the battery and motor for any problems relating to manufacturers workmanship or arising from material defects.

The warranty does not cover misuse or failure to follow the manufacturer's operational instructions correctly.

All other components are guaranteed for 1 year for problems related to manufacturer workmanship or arising from material defects with the exception of consumable components for example brake blocks, pads, grips, tyres and tubes.

Ideal World offers this warranty to the original purchaser of the product. This warranty is not transferable to a third party.

**PLEASE NOTE:**

Any figures quoted regarding battery performance or distances which can be obtained per single charge are based on standard test conditions. Diverse terrain and rider weight will of course produce varying results from those stated.

Please call our  
Technical help line:  
(weekdays 9am-5pm)

**01702 208187**

(standard call rate charge applies)

## Notes

[illegible]





POWER ASSISTED BICYCLES

## IMPORTANT!

PLEASE REMEMBER THAT  
IT IS IMPORTANT TO KEEP  
THE CARTON YOUR BIKE  
ARRIVED IN , COURIERS  
CANNOT COLLECT YOUR  
BIKE WITHOUT A CARTON  
SHOULD YOU HAVE NEED  
TO RETURN IT TO US.



Distributed in the UK by

## Ideal World.

Ideal Home House,  
Newark Road,  
Peterborough,  
PE1 5WG

Please call our  
Technical help line:

(weekdays 9am-5pm)

**01702 208187**

(standard call rate charge applies)